



**Alex & Matteo**  
ESTATE AGENTS



## Block 14, London, SE16 3EZ

A modern two bedroom apartment located in a tranquil residential Bermondsey cul-de-sac.

The apartment features a modern, open plan, newly refurbished kitchen and reception room, master bedroom with built-in storage, second bedroom currently used as a home office, and a stylish bathroom. Additional storage can be found in the hallway.

South Bermondsey Station for a 5 minute commute to London Bridge is just round the corner as well as a plethora of local amenities. The development is on a cycle quietway.

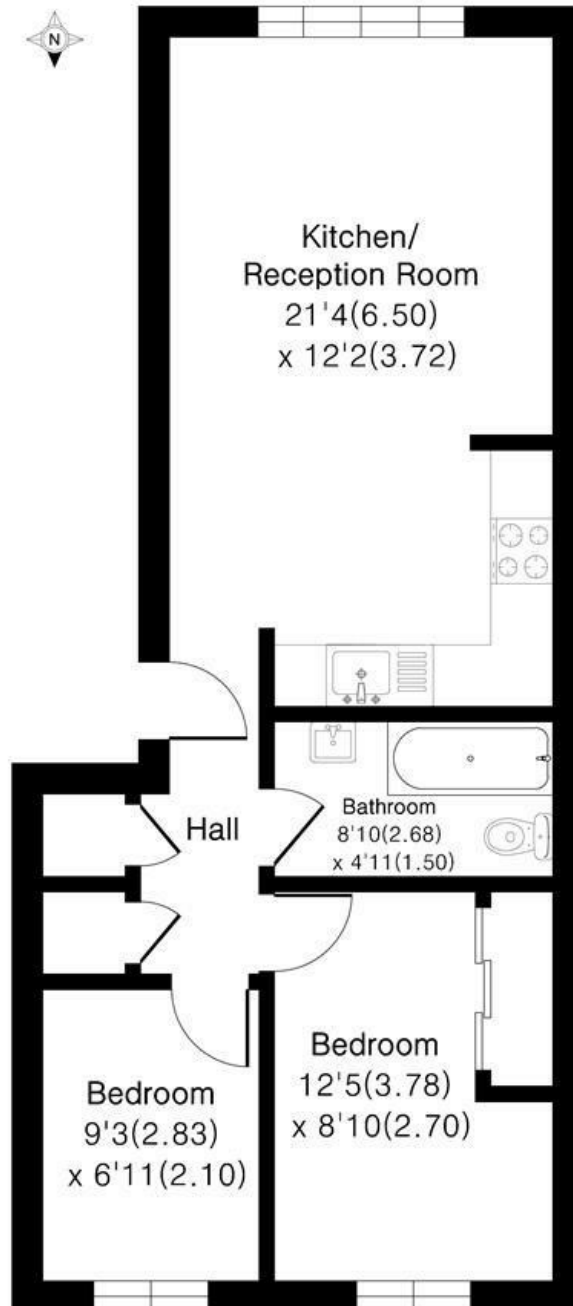
- Generous Two Bedroom Apartment
- Excellent Location
- Good Transport Links
- Plenty of Storage
- Furnished
- Newly Refurbished Kitchen

**Alex & Matteo**  
ESTATE AGENTS

**£1,900 Per month**

## Rossetti Road SE16

Approximate Area = 546 sq ft / 50.7 sq m



Third Floor



Floor plan Produced in accordance with RICS Property Measurement 2nd Edition.  
Incorporating International Property Measurement Standards (IPMS2 Residential).  
Produced for Alex & Matteo Estate Agents.

Energy Efficiency Rating		
	Current	Potential
Very energy efficient - lower running costs		
(92 plus) <b>A</b>		
(81-91) <b>B</b>		
(69-80) <b>C</b>	72	82
(55-68) <b>D</b>		
(39-54) <b>E</b>		
(21-38) <b>F</b>		
(1-20) <b>G</b>		
Not energy efficient - higher running costs		
<b>England &amp; Wales</b> EU Directive 2002/91/EC		